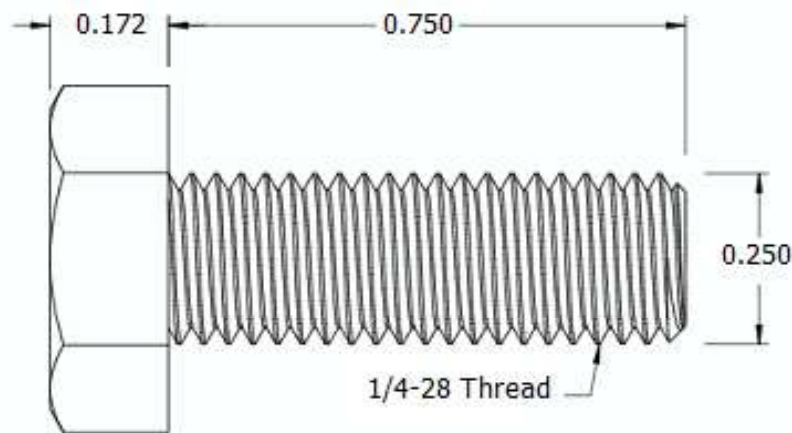
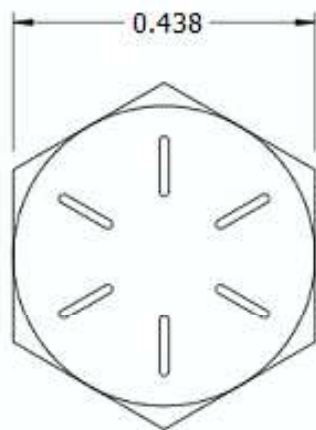



This drawing and the information contained herein are the confidential and proprietary property of Global Supply LLC



PART NUMBER	LENGTH
25F4HCS8Y	1/16
25F8HCS8Y	1/8
25F12HCS8Y	3/16
25F16HCS8Y	1/4
25F20HCS8Y	5/16
25F24HCS8Y	3/8
25F32HCS8Y	1/2
25F40HCS8Y	5/8
25F44HCS8Y	11/16
25F48HCS8Y	3/4

NOTES:

1. INTERPRET DRAWINGS PER ASME Y14.5M-1994 STANDARD.
2. DIMENSIONS & TOLERANCES PER ANSI/ASME B18.2.1
3. ROHS AND REACH COMPLIANT

DRAWING SCALE:			MATERIAL:		DESCRIPTION:	
STANDARD			GRADE 8 STEEL		1/4-28 HEX HEAD CAP SCREW	
TOLERANCES: <i>Unless specified otherwise, all dimensions are in inches</i>		<div><div>x.xxx</div><div>+/- 0.005</div></div> <div><div>x.xx</div><div>+/- 0.010</div></div> <div><div>x.x</div><div>+/- 0.010</div></div>	FINISH:		PART NUMBER:	
			ZINC II		25FXXHCS8Y	
DRAWN BY:		LCLARY		FSCM No.		<div><div>Global Supply LLC</div><div>WORLDWIDE SUPPLIER OF ELECTRONIC HARDWARE, FASTENERS & COMPONENTS</div><div><small>500 Division Street, Campbell, CA 95008-6906 Tel: 408 960 0370 Fax: 408 960 0375 Web: www.globalsupply.com</small></div></div>
REV:		APPROVAL	DATE:	67012		
INITIAL RELEASE		LJA	Jun 4, 2018			
				ECCN		
				EAR99 = NLR (No License Required)		