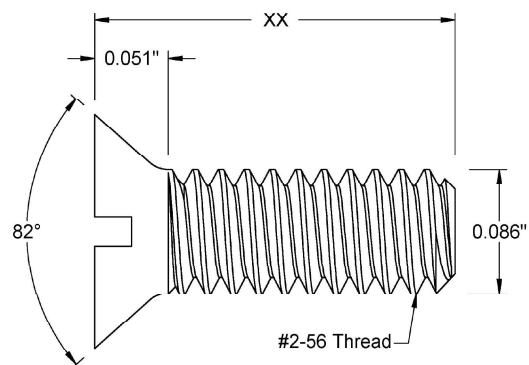
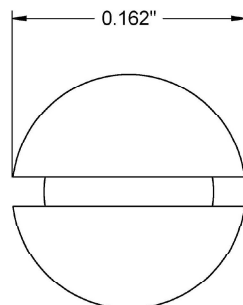



This drawing and the information contained herein are the confidential and proprietary property of Global Supply LLC



PART NUMBER	LENGTH
2C8MI82O	1/8
2C12MI82O	3/16
2C16MI82O	1/4
2C20MI82O	5/16
2C24MI82O	3/8
2C28MI82O	7/16
2C32MI82O	1/2
2C36MI82O	9/16
2C48MI82O	3/4
2C56MI82O	7/8
2C64MI82O	1

NOTES:  
 1. INTERPRET DRAWINGS PER ASME Y14.5M-1994 STANDARD.  
 2. DIMENSIONS & TOLERANCES PER ANSI/ASME B18.6.3  
 3. ROHS AND REACH COMPLIANT

DRAWING SCALE:			MATERIAL:		DESCRIPTION:	
STANDARD			STEEL		#2-56 FLAT SLOT 82° HEAD MACHINE SCREW	
TOLERANCES: <i>Unless specified otherwise, all dimensions are in inches</i>		<div><div>x.xxx</div><div>+/- 0.005</div></div> <div><div>x.xx</div><div>+/- 0.010</div></div> <div><div>x.x</div><div>+/- 0.010</div></div>	FINISH:		PART NUMBER:	
			BLACK OXIDE		2CXXMI82O	
DRAWN BY:		L.CLARY		FSCM No.  67012		<div><div><div>Global Supply</div><div>LLC</div><div>WORLDWIDE SUPPLIER OF ELECTRONIC HARDWARE, FASTENERS &amp; COMPONENTS</div><div><div>500 Division Street, Campbell, CA 95008-6906</div><div>Tel: 408 960 0370   Fax: 408 960 0375   Web: <a href="http://www.globalsupply.com">www.globalsupply.com</a></div></div></div></div>
REV:	APPROVAL	DATE:				
INITIAL RELEASE	LJA	Apr 5, 2018	ECCN  EAR99 = NLR (No License Required)			