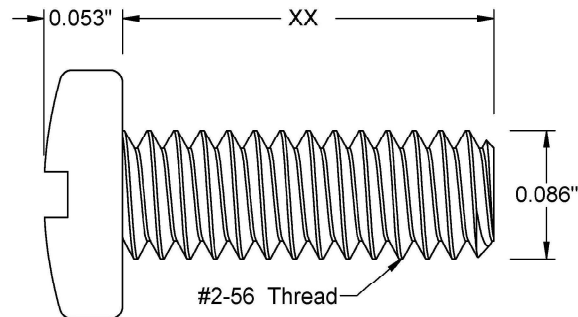
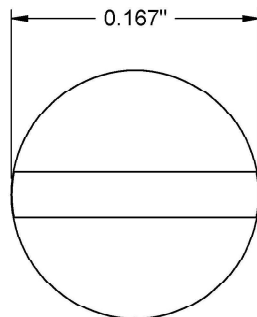



This drawing and the information contained herein are the confidential and proprietary property of Global Supply LLC



PART NUMBER	LENGTH
2C40MIPN	5/8
2C48MIPN	3/4
2C52MIPN	13/16
2C56MIPN	7/8
2C64MIPN	1
2C72MIPN	1 1/8
2C80MIPN	1 1/4
2C88MIPN	1 3/8
2C96MIPN	1 1/2
2C104MIPN	1 5/8
2C112MIPN	1 3/4
2C120MIPN	1 7/8

NOTES:

1. INTERPRET DRAWINGS PER ASME Y14.5M-1994 STANDARD.
2. DIMENSIONS & TOLERANCES PER ANSI/ASME B18.6.3.
3. ROHS AND REACH COMPLIANT

DRAWING SCALE:			MATERIAL:		DESCRIPTION:		
STANDARD			NYLON		#2-56 SLOTTED PAN HEAD MACHINE SCREW		
TOLERANCES: <i>Unless specified otherwise, all dimensions are in inches</i>		x.xxx +/- 0.005 x.xx +/- 0.010 x.x +/- 0.010		FINISH:		PART NUMBER:	
				PLAIN		2CXXMIPN	
DRAWN BY:		L.CLARY		FSCM No.		<div><div>Global Supply LLC</div><div>WORLDWIDE SUPPLIER OF ELECTRONIC HARDWARE, FASTENERS & COMPONENTS</div><div>500 Division Street, Campbell, CA 95008-6906 Tel: 408 960 0370 Fax: 408 960 0375 Web: www.globalsupply.com</div></div>	
REV:		APPROVAL		DATE:			
INITIAL RELEASE		LJA		Apr 6, 2018			
				ECCN			
				EAR99 = NLR (No License Required)			